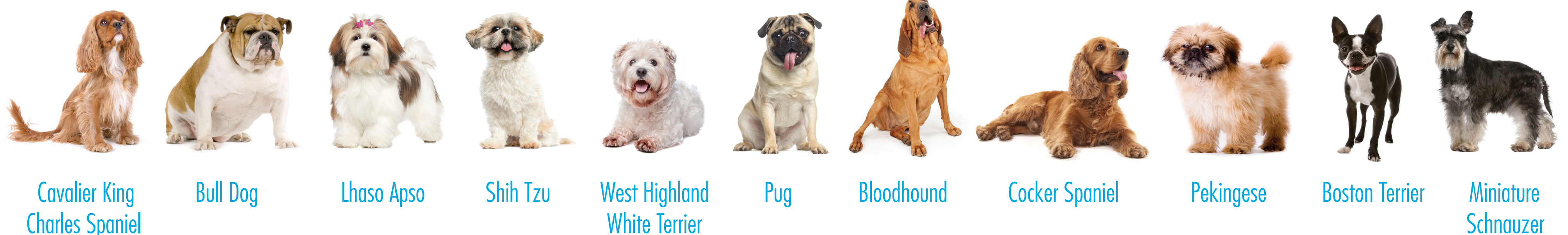


# If left untreated, dry eye could result in permanent blindness.

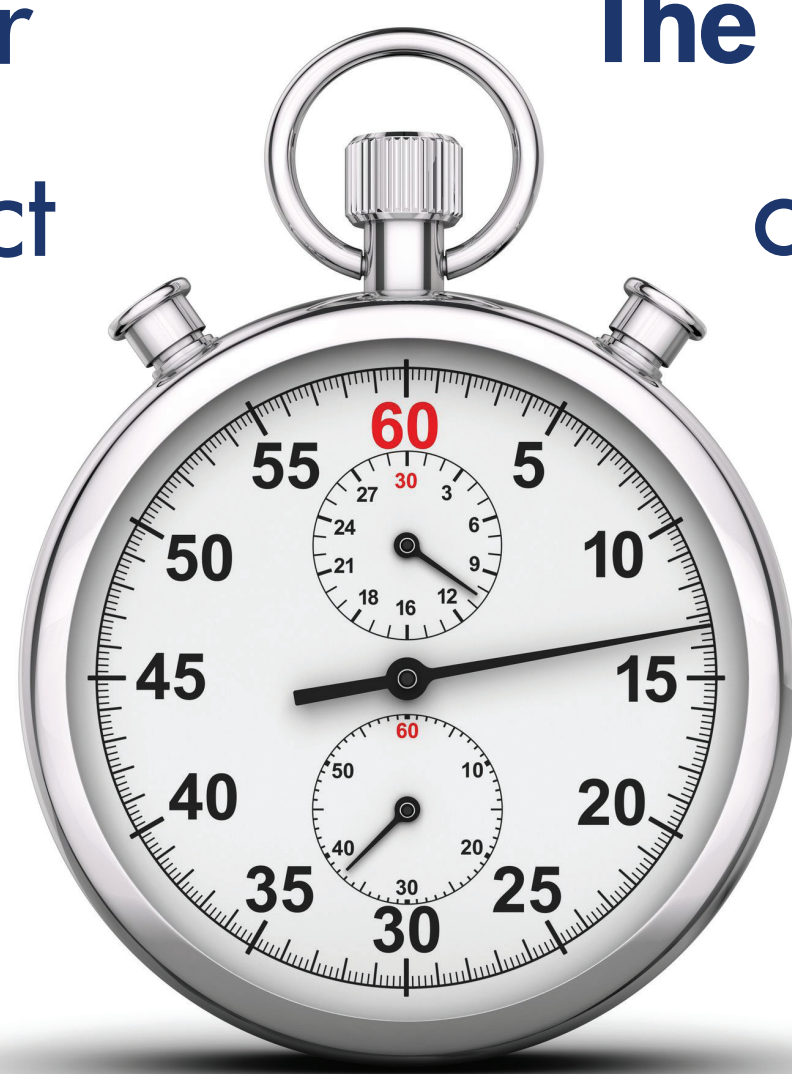


**Dry eye disease most commonly affects senior dogs. Certain dog breeds that are more likely to develop dry eye.**



**60 Seconds** is all it takes for your veterinary professional to conduct a simple test and see if your dog's sight is at risk or not!

**A quick** and simple Schirmer Tear Test (STT) can help diagnose dry eye which is manageable when detected early.



**The diagnosis** of dry eye is made by observing clinical signs, medical history and measuring volume of tears. Talk to your veterinarian about how Optixcare products can help you to manage dry eye and related issues. For more information, go to [www.optixcare.com](http://www.optixcare.com) or click on the QR code.



# Optixcare